



St. Gregory Parish School strives to create and foster a safe learning environment where a child may grow spiritually, academically, emotionally and socially through a quality education, a living relationship with God and a respect for themselves and others. We strive to recognize that each person is scared and unique, and we encourage each student to explore and meet their full potential, so that they may successfully respond to the challenges of like and the call to become leaders for Christ, America and the world.

NWEA Student Testing

NWEA Testing, the winter bench mark testing, is scheduled for Monday, January 6th through Friday, January 10th. All students are encouraged to be in attendance the entire week. Make up testing will be conducted Monday, January 13th through Friday, January 17th.



End of 2nd Quarter is Friday January 17th. Report Cards will be sent home 01/23/2025. Please review your child's report card than sign and return the envelope to the school.

NO SCHOOL

Wednesday, January 1st – New Year's Day

Monday, January 13th PTO Meeting at 6:30 PM in the library.

Tuesday, January 14th Advisory Meeting 7 PM



Congratulations to Addie Lindahl for scoring 10th place at Mercyhurst Prep placement. Awesome job!

**Hot Lunch Orders
 February 2025 – Due 1/31/2025**

Name: _____ Grade: _____

2/6 Chicken Tender, Mash Potatoes & Veggie ___ x \$4.00= \$___

2/13 Burger, Chips & Fruit _____ x \$4.00 = \$___

2/20 Pasta, Salad & Roll _____ x \$4.00 = \$___

2/27 Chicken Picker Bowl _____ x \$4.00 = \$___

Total Lunches Ordered _____ x \$4.00 = _____ Enclosed

**Subway Orders
 February 2025 – Due 1/31/2025**

Name: _____ Grade: _____

2/11 ___ Ham ___ Turkey ___ Cold Cut Combo
 ___ White Bread ___ Wheat Bread

Total Subs Ordered _____ x \$5.00 = _____ Enclosed

**Pizza Orders
 February 2025 – Due 1/31/2025**

Name: _____ Grade: _____

2/4 # slices _____ C or P x \$2.00 = \$___

2/18 # slices _____ C or P x \$2.00 = \$___

Total Slices Ordered _____ x \$2.00 = _____ Enclosed

**Taco Lunch
 February 2025 – Due 1/31/2025**

Name: _____ Grade: _____

2/25 _____ x \$4.00 = _____

Inclement Weather and 2 Hr. Delays

With the changing season, in the event of a school cancellation or a 2 hour delay, you will be notified via the parent broadcast system. *Please make sure that you are receiving these notifications.* In the event of a 2 Hr. delay **Preschool and Prekindergarten** will also be delayed until 10:30 and will run from 10:30 until 3:00. Students can bring a packed lunch and will eat in the cafeteria. Also, before school care will also be delayed by 2 hours and will start at 9:30 a.m.



School Musical

Friday & Saturday

January 24th & 25th

7:00 PM

RECESS

Children will be going outdoors for recess if the wind chill factor is at least 20 degrees Fahrenheit, unless it is actively raining or very wet/sloppy/icy underfoot. Therefore, PLEASE make sure your children dress appropriately for the weather. This means: heavy coats, boots, hats, gloves or mittens, scarves, etc. The children need the fresh air and exercise, but we don't want them getting chilled or sick, so please make sure they are prepared for the weather.



February

- February 1st – Cash Bash
- February 2nd – Feast of St. Blaise
- February 3rd – Blessing of Throats
- February 6th, 7th, 10th & 11th – Treats for Sweets Sales
- February 7th – Tuition raffle deadline
- February 9th – Super Bowl
- February 10th - PTO Meeting 6:30 PM
- February 11th – School Liturgy 9:15 AM
Advisory Meeting 7 PM
- February 13th – Treats for Your Sweets Delivery Day
- February 14th - *Happy Valentine's Day*
- February 15th – Disney Purse Bingo
- February 17th – **NO SCHOOL**
Happy President's Day
- February 21st – School Bus Driver Appreciation Day
- February 25th – School Liturgy 9:15 AM
- February 28th – Lunch Orders Due



Anniversary Cash Bash



Benefiting St. Gregory School & St. Gregory Church

Saturday, February 1, 2025

St. Gregory School Gym, 140 W. Main Street, North East

Option 1: Party Pass!

Ticket Includes...

- Entry into ALL 30 Cash AND Door Prize Drawings including the last cash drawing for \$500!
- Admission to the party enjoying food, beverages, games of chance and fun!!
Doors open at 6pm!
\$25 per ticket

Option 2: Go Virtual!

Ticket Includes...

- Entry into ALL 15 Cash Prize Drawings including the last cash drawing for \$500!
- Opportunity to watch the drawings live at <https://www.facebook.com/StGregoryThaumaturgus/>
\$15 per ticket

Special New Year's rate of 2 tickets for \$40 for the Party Pass, or 2 tickets for \$25 for the Go Virtual. The New Year's Sale will begin on Monday, January 6th and extend through Friday, January 10th



Tickets can be purchased at the St. Gregory School Office located at 140 W. Main St. or at the door the evening of the event. Thank You!



Cash Bash Tickets will on sale at the school from January 2nd until January 10th. The tickets will be at the discounted price of 2 tickets for \$40 or 2 virtual tickets for \$25.

Teacher Wish List Items

LIBRARY – Mrs. Braun

Saint books or money for Saint books

PRE K – Ms. Rogus

Ziplock gallon & sandwich bags

Pump soap

Hand sanitizer

Paper towels

1 inch binders

Binder dividers

Plastic trays for centers

Fake bugs – colored & regular
for math and science

Clorox Wipes



KINDERGARTEN – Mrs. Kloss

Used or unwanted toys for classroom

Coloring books

Extra sets of mittens or gloves for recess

LEVEL 1 – Ms. Stocker

Ziplock bags

Clorox wipes

Construction paper

Wet wipes

Small toys and fidgets

Candy for prize box



LEVEL 3 – Mrs. Hurrell

Clorox wipes

Hand wipes or wet wipes

Hard mints for test taking

LEVEL 2 – Ms. O'Neil

Ziplock gallon bags

Glue Sticks

LEVEL 4 - Mrs. Helffrich

Dictionaries

Baby Wipes

Alien Tape

Mr. Clean Magic Eraser
for the floor

Crayola markers &
colored pencils



OFFICE

Copy Paper – white & colored

Pigeon Forge Package Raffle



Would you like to earn a chance to win \$1,000 off next year's tuition? Well we have a simple and easy way to do just that! The Crusade for Kids Auction will be raffling a Pigeon Forge Package. In order to have your name entered into the tuition drawing you must sell 12 raffle tickets and return the money to the school. For every 12 raffle tickets you sell your name will be entered.

Each family was given 12 raffle tickets to sell. The tickets were sent home the November 21st. If you need additional raffle tickets please send a note into the office and tickets will be sent home with your child.

The raffle winner for the Pigeon Forge package will be drawn on April 26th at the Auction. If the winner is not present, they will be notified on Monday, April 28, 2025.

The raffle package is over a \$1,500 value and includes:

- \$750 Gift Certificate to Colonial Properties
- \$300 for Dollywood
- \$200 Gift Certificate to Buc-ee's
- \$200 Visa Gift Card
- 4 Passes for the Alpine Coaster which is a \$76 value

The prize package expires November 2025.



St. Gregory School Crusade for Kids Auction WIN A \$1,000 TUITION DISCOUNT

As a special incentive to procure goods and services for the Crusade for Kids Auction on Saturday, April 26, 2025, we are raffling off a \$1,000 discount towards next year's tuition. If your family had procured \$500 worth of new items or services for the auction by the **early procurement deadline**, you will receive one (1) entry ticket into the tuition discount raffle. **You will earn an additional entry ticket into the raffle for every additional \$100 worth of new items or services you procure. The more you procure, the more chances you have to win!**

The deadline for entry into this raffle is **Friday, February 7, 2025**. Procurement forms must be turned in by this date to be included in your procurement total and to be eligible for the raffle. All procurement forms are due by Monday, March 3, 2025 as per your tuition contract.



**Discounted tuition will be applied to the 2025/2026 school year unless winning family is a preschool family who would like to apply their tuition to kindergarten for the 2026/2027 school year. Discounted tuition may not be applied to preschool tuition or to existing tuition for a graduating 8th grade student.*



2025 NORTH EAST LL REGISTRATION

Each player registered by December 31st will be entered into a drawing for a REGISTRATION FEE REFUND
Funds will be granted in the form of a refund to the account holder of the winning player

2025 REGISTRATION FEES:

TEEBALL (LEAGUE AGE 4-6) \$50
BASEBALL/SOFTBALL (LEAGUE AGE 7+) \$60
League Age 6 can play up in Coach Pitch if they've played at least 1 year of TeeBall.

Fundraiser Fee (\$50) is also collected at Registration
MAX 2 Fundraisers per Family

NEW FOR 2025

Starting this year we will be offering a payment plan! Initial payment will be made at registration with additional payments 2/15 and 3/15. Players MUST be registered by 1/15/25 to take advantage of the payment plan option.



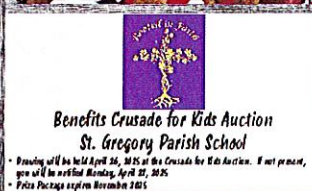
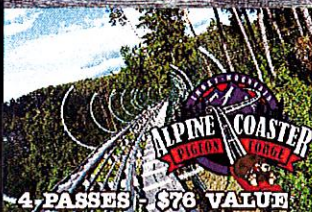
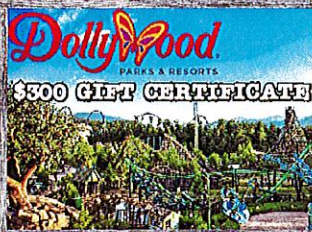
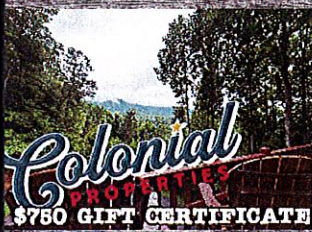
REGISTER ONLINE AT
NORTHEASTPALITTLELEAGUE.COM

THIS IS NOT A PROGRAM OF THE NORTH EAST SCHOOL DISTRICT. THE LEAGUE DOES NOT ACCEPT LIABILITY FOR THIS PROGRAM.

PIGEON FORGE GETAWAY

\$10 Per Chance or 3 for \$20

Prize Package Valued Over \$1500



ST. GREGORY SCHOOL DISNEY BINGO
140 WEST MAIN ST.
NORTH EAST, PA 16428



SATURDAY, FEBRUARY 15TH, 2025

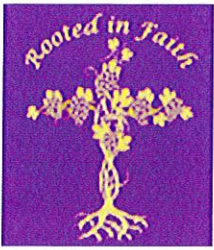
DOORS OPEN 12:00 PM
BINGO STARTS AT 1:30 PM

TICKETS \$45 OR TABLE OF 8- \$320

814-725-4571

WWW.STGREGS.NET





St. Gregory Parish School
Catholic Schools Week
January 26th - February 1st



Since 1974, National Catholic Schools Week is the annual celebration of Catholic education in the United States. The theme for National Catholic Schools Week 2025 is "Catholic Schools: United in Faith and Community." Through these events, schools focus on the value Catholic education provides to young people and its contributions to our church, our community and our nation.

	<p>Sunday - Celebrate your Parish</p> <p>CSW kick off mass at 9:00 AM followed by a gathering in the family meeting room downstairs of St. Gregory Church. Students are to wear uniforms. Students will participate in Music-Bongos, Readers, Greeters, Special Presentation and Hospitality. Please plan on attending.</p>
	<p>Monday - Celebrate your Community</p> <p>Spirit Day - Students wear their uniforms with crazy socks.</p> <p>Students will collect new blankets for Hospice patients. The blankets will be turned into "Prayer Blankets" and blessed before given as a donation.</p>
 <small>shutterstock.com - 705713990</small>	<p>Tuesday - Celebrate your Students</p> <p>Mix & Match outfit and crazy hair day. Students that do not participate must wear their uniform. NO HOMEWORK TODAY!</p> <p>Students will be collecting \$1.00 for "Patty's Pink Warriors" for Breast Cancer.</p>
	<p>Wednesday - Celebrate your Nation</p> <p>Wear school uniform with accessories of red, white & blue. Students will be writing letters to other Catholic School Students across the nation.</p> <p>Teachers and students will be preparing soup for the "Souper Bowl."</p>
	<p>Thursday - Celebrate your Vocation</p> <p>We will celebrate our vocations by dressing the part. Students may dress up as their future vocation. How will you use your gifts and talents?</p> <p>Students will send cards of encouragement to seminarians.</p> <p>"Super Bowl" soup samples made by the students for lunch from 11:45 AM - 12:30 PM</p>
	<p>Friday - Celebrate Faculty, Staff & Volunteers</p> <p>On this day we celebrate the end of a successful CSW by recognizing faculty, staff & volunteers who make it possible. Faculty lunch provided by PTO. Students may wear sweatpants, sweatshirts or school appropriate PJ's.</p>

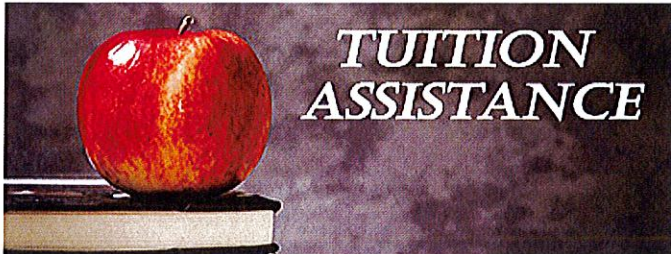
REMINDER:

Next Meeting is Wednesday, January 8th at 6:30 p.m. in the school library.

Hard to believe, but the Crusade for Kids Auction is only three months away (April 26th)! If you've not already done so, please, PLEASE, work on getting your procurements completed and turned in to the school AS SOON AS POSSIBLE. Again, if you are struggling with the procurement process or have questions, do not hesitate to contact Travis Lindahl at thurst@hotmail.com. It is critical that we receive those procurements as early as possible so that we can begin to organize the items for both the silent and live auctions, and begin to create a catalog for the auction.

PLANNING AHEAD FOR 2025 - 2026

Registration forms for the 2025 2026 school year will be sent home in Thursday folders on January 28th. **Please watch for this form; complete and return the form to the school office no later than Thursday, February 13, 2025.** This form must be returned in order to ensure your student will have a spot in next year's classroom. It will also help us in our budgeting and ordering process for the upcoming school year.



Tuition Assistance Applications

Applications for tuition assistance from the Catholic Diocese of Erie will also be sent home on in Thursday Folders on January 18th. They will also be available online at <https://www.eriecd.org>. This tuition assistance through the Diocese is for families wishing to send their children to Catholic Elementary School and/or Catholic High School. If your child will be attending St. Gregory School or a Catholic High School next year, we strongly encourage you to see if you qualify. Eligibility guidelines are stated on the form. The deadline for application submission is April 15, 2025 unless you are applying for assistance with one of the Erie Catholic High Schools in which case the deadline would be March 1st.

In an effort to assist and make sure all applications are submitted, we will mail all completed applications with required documentation and the required \$20.00 payment to the Diocese on Tuesday, April 9, 2025. If you would like to mail your application on your own, that is also fine. Saint Gregory School will be receiving targeted funds to assist families with tuition costs.

In Early April, Saint Gregory School will receive applications from the Kremer Foundation. All eligible families at SGPS and those families who show interest in attending SGPS will receive an application. Every family is encouraged to apply.



Thursday,
February
11th

Calendar Changes


Due to the school being canceled in December for severe weather, we are required to make up those days within the school year. Listed below are the days students will be required to attend:

Monday, January 20th
Friday, February 14th
Friday, March 14th



January 2025

SUN MON TUE WED THU FRI SAT

			1 	2 HOT LUNCH Pasta, Salad & Roll	3	4
5 NWEA Testing	6 NWEA Testing	7 Pizza	8 NWEA Testing Crusader for Kids Auction Meeting 6:30 PM	9 NWEA Testing HOT LUNCH Chicken Picker Bowl	10 NWEA Testing	11
12 NWEA Testing	13 PTO Meeting 6:30 PM	14 NWEA Testing Subway Liturgy 9:15 AM Advisory Meeting 7 PM	15 NWEA Testing	16 NWEA Testing HOT LUNCH Hot ham & cheese, corn & fruit	17 NWEA Testing End of 2 nd Quarter	18
19	20 	21 Pizza	22	23 HOT LUNCH Mac & Cheese, Veggie & Roll	24 School Musical 7 PM	25 School Musical 7 PM
26 + Mass 9 AM Catholic Schools Week	27 CSW honoring Community	28 Taco CSW honoring Students	29 CSW honoring Nation	30 CSW honoring Vacations FREE LUNCH Souper Bowl	31 CSW honoring Faculty, Staff & Volunteers Feb. Lunch Orders Due	

Jan 1 - New Year's Day

Jan 20 - MLK Jr. Day

